



**AGÊNCIA NACIONAL DE
TRANSPORTES TERRESTRES**

Initiatives of the Brazilian
National Land Transportation
Agency for Improving Data
Collection

Independent Federal Regulator

Interstate and International
Land Transportation

Technical and
economic analysis



Board

- 1 General Director
- 4 Directors
- Nominated by President
- Confirmed by Senate

2,500 collaborators

Regulated Services

Interstate Toll Roads



20 interstate roads
9,997.24 km
Planned 16,311.22 Km

Road Passenger Transportation

Grant
and
Supervision



Long distance

253 companies
52.6 million passengers
1,988 bus lines

Semiurban

37 companies
32,1 million passengers
67 bus lines

Charter service

3,719 companies
9.4 million passengers

Regulated Services



Grant
and
Supervision



Touristic Rail service

Touristic trains: 2,390 km

Regular Rail Passenger Transportation

Passenger Transportation 1,757 km

Freight Rail

Existing: 29,075 km

Plan: more 15,107 km

1,470 km New

13,637 km Renewal

Regulated Services



Freight Transportation

Transports 65% of goods

More than 126,000 companies

More than 1.17 million trucks

Paid transportation

- Registration of transporters
- Inspections of excess weight of trucks
- Rules to transport dangerous goods
- Toll payment by contractor

New: Minimum freight tax value

Strategic Plan

Mitigate information asymmetry

Perfect enforcement to regulate effectively

Improve technology and data collection

Internal Solutions



CNSO

National Center of
Operation Supervision



Data exchange

ONTL

Integrated Information about
transportation sector

GSI

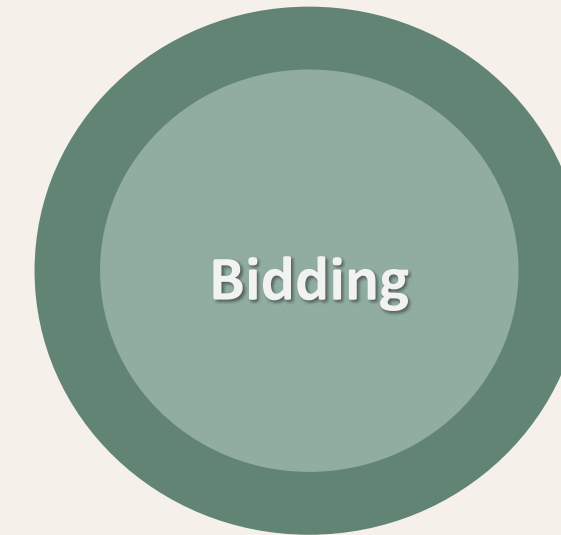
Institutional Safety Cabinet
Presidency of the Republic



Road Passenger transportation



Regularity



Regularity
Offer

Operation Parameters



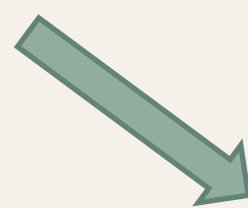
Semiurban
Permit
Operation



Operation data
Long distance
Authorization



Operation data
Charter
Authorization



Impacted data



Fleet

Valid Inspection (CSV)
Enough number of vehicles
Fleet age



Driver

Driver's License
Criminal Activity
Registration at ANTT



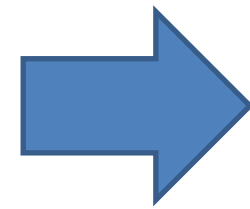
Operation

Schedule
Minimum Market frequency

Data collection changes



Company provides information



Schedule

Vehicle used

Itinerary



Tariff

Frequency

Lessons learned

- Feedback: more frequent feedback about the data sent (weekly)
- 3 classes of companies based on quality of data sent
- Incentive by restriction to ANTT services: requests of new markets
- Specific rules to each type of service (semiurban, long distance, charter)



Receita Federal

Company's Data:
Corporate Structure
Financial information

DENATRAN

Vehicle Data:
Registration
Age
Driver Data:
License



Vehicle inspection information
Vehicle with invalid inspection
information are disabled for
ANTT services



Tourism registration



Licencing of Passenger Transportation Companies.
From 10 days to:
1 day



Work force: 32 to 15

Results

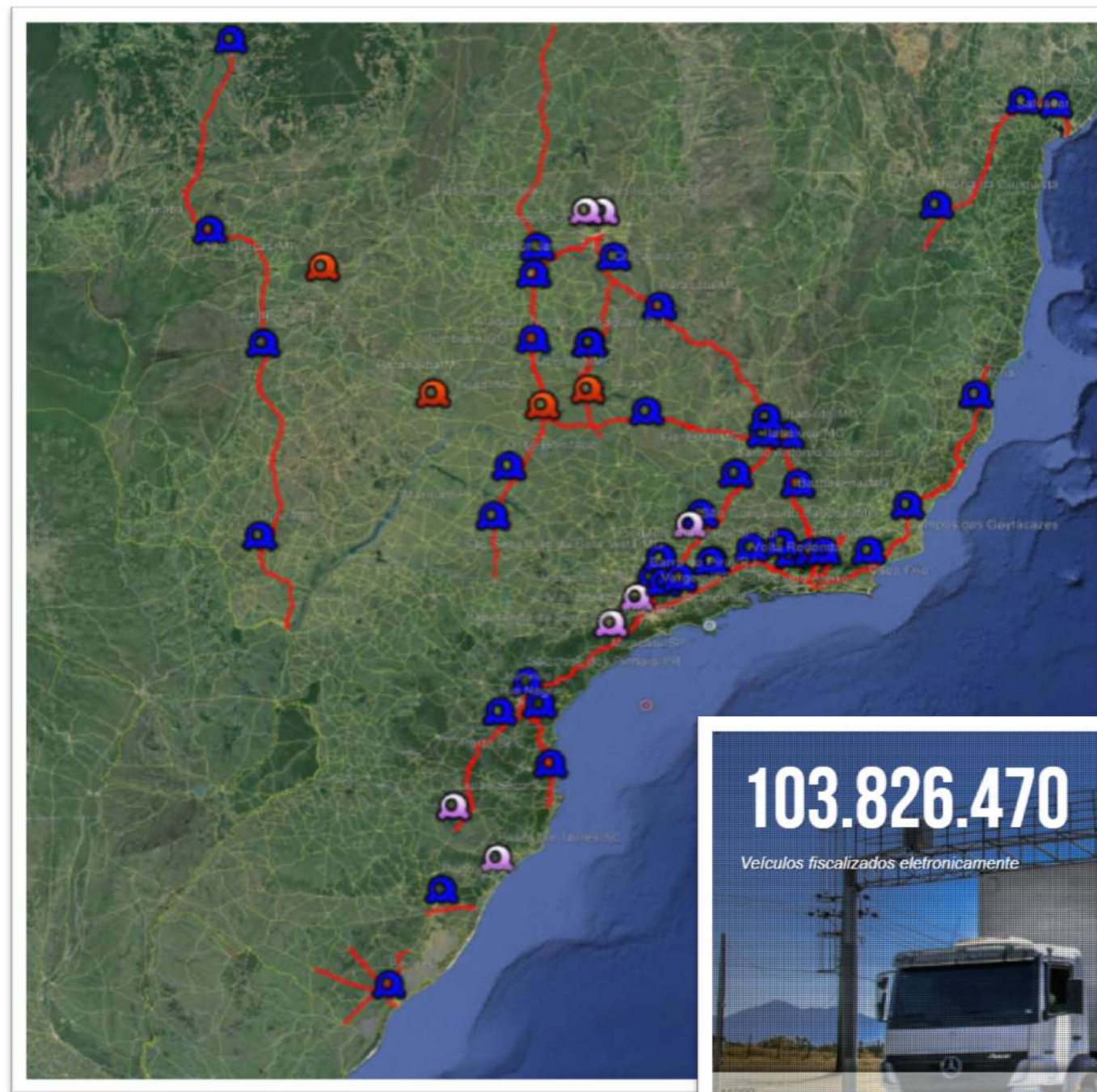
Estimated cost reduction for companies:
1 year: R\$74.5 million
5 years: R\$362.5 million

Canal Verde Brasil



- Passenger and freight transportation
- 1.7 million kilometer highway network
- Less than 500 agents for enforcement

Impacted data



55 Portals OCR and RFID

Electronic supervision of trucks and buses:

- Transportation contract registration
- Toll evasion
- Speed
- Taxes
- Vehicle Licensing and registration at ANTT





Data exchange



Federal Road Police



PortoLog

Ports Entities



Fiscal Entities



Justice Entities



State Regulatory Agencies



Other public organs

Results



Unscheduled delivery

100% to 7%
↓ Traffic jams at port



Inspections

905,213 2010 – 2016
74 million 2016 - 2018



↓ Logistic costs



↑ Competitiveness

CNSO Impacted data



National Center of Operation Supervision

- Traffic Jams
- Visibility (Weather)
- Car crashes
- Concession Parameters
- Maximum hours of congestion
- Revenue control

Other data exchange initiatives



ONTL

Integrated Information about transportation sector



PARCEIROS



Other data exchange initiatives

GSI

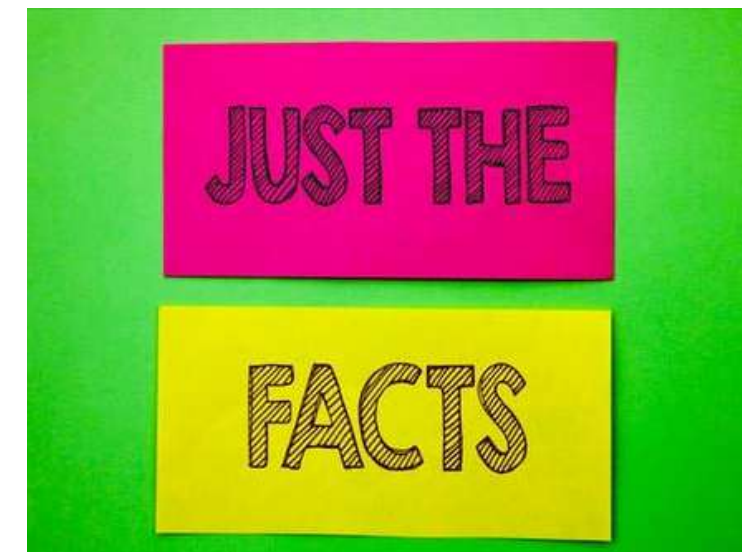
Institutional Safety Cabinet
Presidency of the Republic

- Safety information
- Vehicles
- Drivers
- Stolen Vehicles
- Passenger Transportation Safety issues

Consequences of better data



Responsive Regulation
2019-2021



Evidence-based
Decisions



Obrigada!
Thank you!



Get in touch

Vanessa da Silva Santos
Regulation Specialist

International and Market Affairs Unit
Executive Superintendency

vanessasilva.santos@antt.gov.br

